

## PARTNER SOLUTION OVERVIEW

# HPE ARUBA NETWORKING AND SYOOK SUPERCHARGE YOUR OPERATIONS WITH INSIGHTS FROM RTLS

## INTRODUCTION

Real-time locating systems (RTLS) have become a valuable tool to provide continuous visibility into operations. Organizations can collect and analyze data, automate processes, improve efficiency, and realize sustainability in operations. Aruba and Syook have come together to ensure customers can get the best out of the HPE Aruba Meridian platform through a host of features Syook InSite offers.

Organizations are under pressure to respond quickly to changes in the market and customer needs. This joint solution improves organizational efficiency, increases operational agility, and assists with informed decision-making to automate processes, reduce errors, and streamline workflows.

This solution can drive business outcomes by enabling faster decision-making based on the collected information. IoT and RTLS technologies help to gather data from a range of sources, including sensors, devices, and people. This is becoming increasingly important for organizations looking to gain insights to make better-informed decisions. Together HPE Aruba Networking and Syook help businesses extract additional value and insight from asset-generated data. Harvesting crucial location data from HPE Aruba Meridian, Syook InSite allows companies to optimize their schedule, and enable targeted decision making by providing valuable reports at the click of a button.

## ABOUT SYOOK

Syook is a Bengaluru-based startup that gives businesses increased visibility into their operations, from the movement of people to the monitoring of assets. Syook believes that the operational improvements our technology brings could result in fundamental operational improvements. Syook is helping industries make a successful transition to Industry 4.0.

Syook InSite is a highly scalable, modular, and configurable No-Code IoT Platform that can be used for solving operational problems that are prevalent across multiple industries. It works out-of-the-box and clients can realize cost savings from day one.

## WHY HPE ARUBA NETWORKING AND SYOOK

**Enhanced Safety:** HPE Aruba Meridian provides real-time high-value asset tracking and Syook InSite's can use that data to achieve reduced emergency mustering time, view the last known location, support missing man alerts, create heatmaps to understand overcrowding in safety-critical areas, and enable replays to understand people movement history.

**Improved Operational Efficiency:** Businesses can gain valuable insights into asset utilization which helps them to optimize resources, reduce risk of theft, improve operational efficiency, and reduce costs.

**Better Compliance:** Syook InSite's dynamic rules engine allows businesses to create custom location-based compliances. Using real-time location data from HPE Aruba Meridian and existing HPE Aruba Networking infrastructure, instant alerts can be generated whenever compliance is broken.

**On-Demand Reports:** Syook InSite's powerful analytics reporting engine generates customizable advanced reports as well as schedules them over a predefined period to be sent directly to relevant stakeholders via email.

Syook has successful deployments ranging from health care, oil & gas, mining, electronics manufacturing, automotive manufacturing, FMCG (fast-moving consumer goods), and chemical manufacturing. Syook has active customers in the Middle East and India and is working with customers at different stages in Japan, Europe and US.

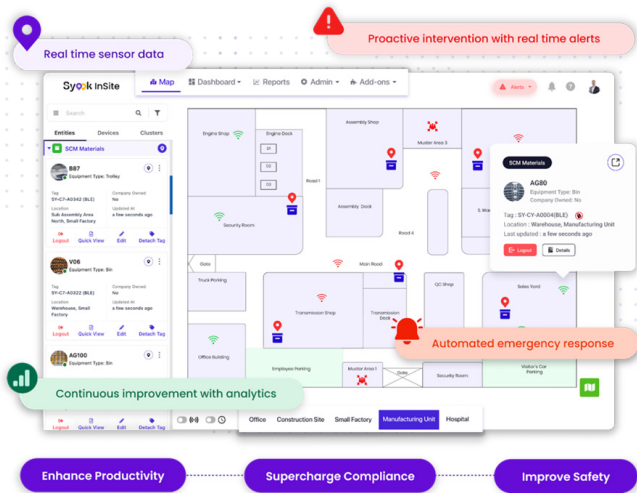


Figure 1. Syook InSite Map View

## BETTER TOGETHER

Together, HPE Aruba Meridian and Syook InSite allows customers to use their existing HPE Aruba Networking location services setup and leverage the extensive platform capabilities of Syook InSite. HPE Aruba Meridian will process the location of the HPE Aruba tags and pass it to the Syook InSite platform for analysis. Syook InSite analytics platform leverages HPE Aruba Meridian's locating capabilities and delivers this data to businesses.

With Syook InSite and HPE Aruba Meridian, users will be able to track the location of different types of entities across the enterprise. The advanced location-based analytics provided by Syook InSite will enable deeper insights into operations by generating relevant business KPIs. By monitoring the location of the people and assets at a facility, businesses can unlock massive value, improving safety, productivity, and asset utilization.

HPE Aruba BLE tags and Syook's InSite are a robust solution with low set-up costs and can be quickly integrated with existing IT infrastructure. InSite can be configured to improve productivity, efficiency, security, and compliance of any operation and a positive impact is immediate.

## UNIQUE VALUE PROPOSITION

The HPE Aruba Meridian and Syook InSite integrated solution provides a full-stack enterprise solution, from hardware to software. Businesses can ensure that their operations teams are being alerted in real-time to take necessary action, enhancing the overall compliance management of their facilities

Examples of real-world problems that can be addressed with our integrated solution are:

1. People tracking for enhanced safety and compliance.
2. In-plant logistics tracking to improve Truck Turnaround Time (TAT)
3. Asset tracking to ensure compliance and enhance productivity
4. Critical/ shared assets utilization and tracking

Syook InSite out-of-the-box modules and add-ons that can be purchased from the marketplace making it a simple solution to download and deploy.

The HPE Aruba Meridian and Syook InSite integrated solution offers unique value by providing businesses with the tools they need to improve safety and increase operational efficiency using location-based analytics and engagement.

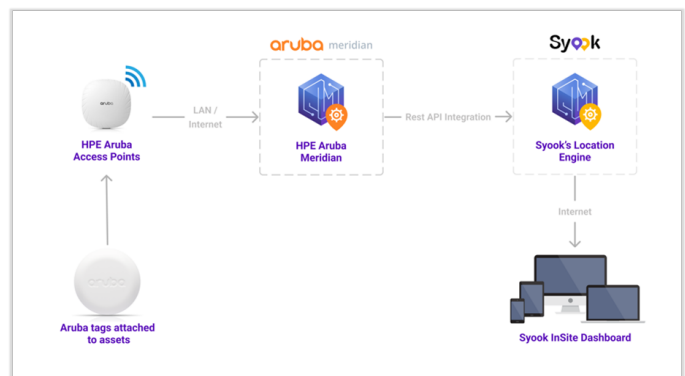


Figure 2. Syook InSite - Aruba Meridian Integration

## CERTIFIED INTEROPERABLE

We've taken the guesswork out of asset tracking by certifying interoperability between the Syook InSite and HPE Aruba Meridian. Set-up is a breeze, and joint deployments go in faster and are easier to maintain.

Once you have Aruba Meridian setup for your location, please send an email to [support@syook.com](mailto:support@syook.com) to enable the Syook InSite application. Our support team will get in touch with you and help you configure your instance of Syook InSite that will work with your location in HPE Aruba Meridian.



## SUMMARY

HPE Aruba Networking's secure infrastructure is the ideal starting point to leverage the insights generated by Syook InSite. Contact your local sales representative to see how together HPE Aruba Networking and Syook deliver a combined RTLS solution with additional insights. The Integration of HPE Aruba Meridian and Syook InSite allows businesses to enhance the customer experience, improve safety and security, and increase operational efficiency using location-based analytics and engagement.

## DEPEND ON SYOOK



At Syook, it is our mission to enhance the competitive advantage of organizations by partnering with them in their digital transformation journey. It is our focus to empower organizations with avant-garde knowledge-based solutions for scalable, seamless workplace operations

**CONTACT US TODAY, SO WE CAN START BUILDING YOUR CUSTOMIZED CLOUD NETWORKING SOLUTION.**

**[www.syook.com](http://www.syook.com)** Phone Number: +91-9501118225 180, 2nd B Cross Road, Stage 2,  
Domlur, Bengaluru, 560071, Karnataka, India



© Copyright 2023 Hewlett Packard Enterprise Development LP. The information contained herein is subject to change without notice. The only warranties for Hewlett Packard Enterprise products and services are set forth in the express warranty statements accompanying such products and services. Nothing herein should be construed as constituting an additional warranty. Hewlett Packard Enterprise shall not be liable for technical or editorial errors or omissions contained herein.

PSO\_ArubaandSyook\_RVK\_030823 a00130621enw

Contact us at [www.arubanetworks.com/contact](http://www.arubanetworks.com/contact)