

Aruba 320 Series Access Points

Installation Guide

Aruba 320 Series access points (AP-324, AP-325, IAP-324, and IAP-325) support IEEE 802.11ac standards for high-performance WLAN, and is equipped with two dual-band radios that can provide access and monitor the network simultaneously. Multi-user, Multiple-In, Multiple-Out (MU-MIMO) technology allows this access point to deliver high-performance 802.11n 2.4GHz and 802.11ac 5GHz functionality, while also supporting 802.11a/b/g wireless services.

The AP-324 and AP-325 work in conjunction with an Aruba Controller, while the IAP-324 and IAP-325 can be configured using a built-in virtual controller.

The Aruba 320 Series provides the following capabilities:

- Dual wireless transceiver
- IEEE 802.11a/b/g/n/ac operation as a wireless access point
- IEEE 802.11a/b/g/n/ac operation as a wireless Air Monitor
- IEEE 802.11a/b/g/n/ac operation as a Spectrum Analysis
- Compatible with IEEE 802.3at PoE power sources
- Centralized management configuration and upgrades
- Integrated Bluetooth Low Energy (BLE) radio

Package Contents

The following materials are included with this product:

- Aruba 320 Series access point
- Ceiling Rail Adapter



Inform your supplier if there are any incorrect, missing, or damaged parts. If possible, retain the carton, including the original packing materials. Use these materials to repack and return the unit to the supplier if needed.

Hardware Overview

The following sections outline the hardware components of the 320 Series access point.

Figure 1 Aruba AP-325 (front view)



LED

The 320 Series access points have LED displays located on the front panel of the access point indicating the following functions:

System Status ⓘ

The System Status LED indicates the operating condition of the access point, See [Table 1](#).

Table 1 System Status LEDs

Color/State	Meaning
Off	Device powered off
Green- solid	Device ready for use
Amber- solid	Device ready; power-save mode (802.3af PoE): <ul style="list-style-type: none">• Single radio• USB disabled
Green/Amber- flashing	Device operating in restricted mode. Meets one of the following conditions: <ul style="list-style-type: none">• Uplink negotiated in sub-optimal speed; or• Radio in non-high throughput (HT) mode
Green/Amber- alternating	Device booting; not ready

Radio Status 📶

The Radio Status LED indicates the operating mode of the access point's radios. See [Table 2](#).

Table 2 Radio Status LEDs

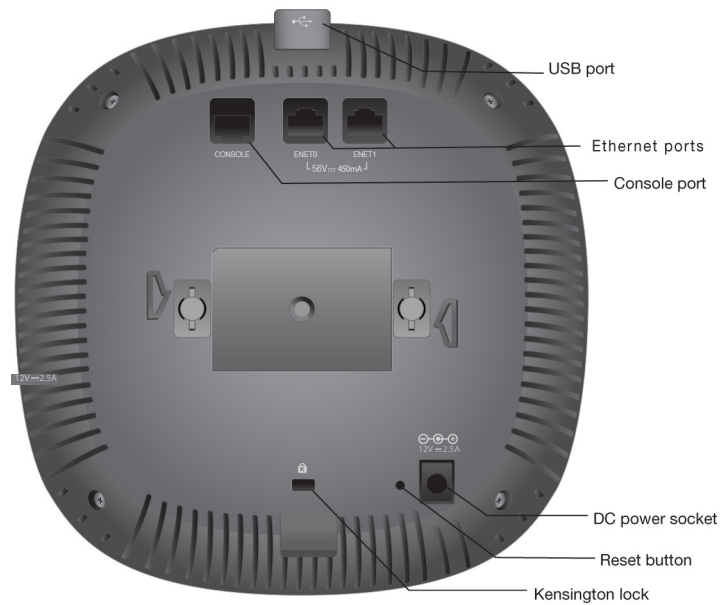
Color/State	Meaning
Off	Device powered off, or both radios disabled
Green- solid	Both radios enabled in access mode
Amber- solid	Both radios enabled in monitor mode
Green/Amber- alternating	One radio enabled in access mode, one enabled in monitor mode

LED Display Settings

The LEDs have three operating modes that can be selected in the system management software:

- Default mode: Refer to [Table 1](#) and [Table 2](#)
- Off mode: LEDs are off
- Blink mode: LEDs blink green

Figure 2 320 Series Access Point (rear view)



External Antenna Connectors

The AP-324 and IAP-324 access points are equipped with four external antenna connectors located on the front corners of the access point (see [Figure 3](#)).

Figure 3 External Antenna Connectors



External antennas for this device must be installed by an Aruba Certified Mobility Professional (ACMP) or other Aruba-certified technician, using manufacturer-approved antennas only. The Equivalent Isotropically Radiated Power (EIRP) levels for all external antenna devices must not exceed the regulatory limit set by the host country/domain. Installers are required to record the antenna gain for this device in the system management software.



CAUTION

Les antennes externes pour cet appareil doivent être installées par un professionnel de la mobilité certifié Aruba (ACMP) ou un autre technicien certifié Aruba, en utilisant uniquement des antennes approuvées par le fabricant. Les niveaux équivalents de puissance à rayonnement isotrope (EIRP) pour tous les périphériques d'antenne externe ne doivent pas dépasser la limite réglementaire définie par le pays hôte / domaine. Les installateurs doivent enregistrer le gain d'antenne pour cet appareil dans le logiciel de gestion du système.

Bluetooth Low Energy Radios

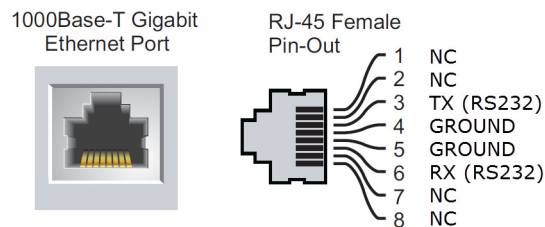
320 Series access points are equipped with an integrated BLE radio that provide the following capabilities:

- location beacon applications
- wireless console access

Console Port

The serial console port allows the user to connect the access point to a serial terminal or a laptop for direct local management. This port is an RJ45 connector, with pin-out details in [Figure 4](#). Connect it directly to a terminal or terminal server using an Ethernet cable.

Figure 4 Serial Port Pin-out

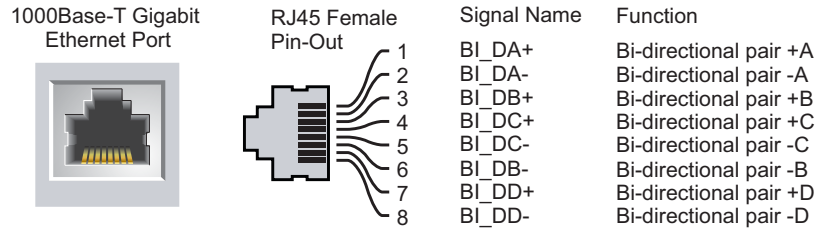


Ethernet Ports

The 320 Series is equipped with two 10/100/1000 Base-T (RJ45) auto-sensing, MDI/MDX wired-network

connectivity ports. These ports support IEEE 802.3af and 802.3at Power over Ethernet (PoE) compliant sources, accepting 56V DC (nominal) as a standard defined Powered Device (PD) from a Power Sourcing Equipment (PSE), such as a PoE midspan injector, or network infrastructure that supports PoE. The 10/100/1000 Mbps Ethernet ports are on the bottom of the access point. These ports have RJ45 female connectors with the pin-outs shown in Figure 5.

Figure 5 Gigabit Ethernet Port Pin-Out



Kensington Lock Slot

The 320 Series is equipped with a Kensington lock slot for additional security.

USB Interface

The 320 Series is equipped with a USB port for connectivity with cellular modems and other USB client devices. When powered by an 802.3at or DC source the USB port can supply up to 5W. The USB is disabled when powered by an 802.3af PoE source.

Figure 6 USB Port



Reset Button

The reset button can be used to return the access point to factory default settings. To reset the access point, refer to the following steps:

1. Power off the access point.
2. Press and hold the push button using a small, narrow object, such as a paper clip.
3. Power-on the access point without releasing the push button. The System Status LED will flash within 5 seconds.
4. Release the reset button.

The system status LED will flash again within 15 seconds indicating that the reset is completed. The access point will now continue to boot with the factory default settings.

Power

The E0 and E1 ports support PoE-in, allowing the device to draw power from an 802.3at source (recommended) or an 802.3af source. When both PoE and DC power sources are available, the access point defaults to using the DC power source.

If PoE is not available, the 320 Series has a single 12V/30W DC power jack socket to support the AP-AC-12V30UN AC-to-DC adapter kit (sold separately).

Power Modes

The 320 Series can operate in two power modes. The modes are not configurable and are determined by the

access point based on the amount of power available.

The 320 Series access points operate without restrictions when powered by a DC or 802.3at PoE source. When powered by an 802.3af PoE source, the following restrictions apply:

- Second Ethernet Port disabled
- USB interface disabled
- 2.4 GHz in 1x1:1 mode

Before You Begin

Refer to the sections below before beginning the installation process.



CAUTION

FCC Statement: Improper termination of access points installed in the United States configured to non-US model controllers will be in violation of the FCC grant of equipment authorization. Any such willful or intentional violation may result in a requirement by the FCC for immediate termination of operation and may be subject to forfeiture (47 CFR 1.80).

Pre-Installation Checklist

Before installing your Aruba 320 Series access point, be sure that you have the following:

- Cat5E UTP cable with network access installed in the wall box
- One of the following network services:
 - IEEE 802.3at or 802.3af-compliant Power over Ethernet (PoE) source. The PoE source can be any power source equipment (PSE) controller or midspan PSE device
 - Aruba APAC-DC adapter kit (sold separately)

For AP-324 and AP-325 only:

- Aruba Controller provisioned on the network:
 - Layer 2/3 network connectivity to your access point
 - One of the following network services:
 - Aruba Discovery Protocol (ADP)
 - DNS server with an "A" record
 - DHCP Server with vendor-specific options



NOTE

Aruba Networks, Inc., in compliance with governmental requirements, has designed the 320 Series access points so that only authorized network administrators can change the settings. For more information about access point configuration, refer to the *ArubaOS Quick Start Guide/Aruba Instant Quick Start Guide* and *ArubaOS User Guide/Aruba Instant User Guide*.

Pre-Installation Connectivity



NOTE

The instructions for this section are applicable to the AP-324 and AP-325 only.

Before installing access points in a network environment, make sure that they are able to locate and connect to the controller after power on.

Specifically, verify the following conditions:

- When connected to the network, each access point is assigned a valid IP address
- Access points are able to locate the controller

Refer to the *ArubaOS Quick Start Guide* for instructions on locating and connecting to the controller.

Identifying Specific Installation Locations

This access point should be oriented vertically, with rubber pads facing downward to facilitate maximum antenna gain. Mount the 320 Series on a wall or on the ceiling. Use the access point placement map generated by Aruba RF Plan software application to determine the proper installation location(s). Each location should be as close as possible to the center of the intended coverage area and should be free from obstructions or obvious sources of interference. These RF absorbers/reflectors/interference sources will impact RF propagation and should be accounted for during the planning phase and adjusted for in RF plan.

Identifying Known RF Absorbers/Reflectors/Interference Sources

Identifying known RF absorbers, reflectors, and interference sources while in the field during the installation phase is critical. Make sure that these sources are taken into consideration when you attach an access point to its fixed location.

RF absorbers include:

- Cement/concrete—Old concrete has high levels of water dissipation, which dries out the concrete, allowing for potential RF propagation. New concrete has high levels of water concentration in the concrete, blocking RF signals.
- Natural Items—Fish tanks, water fountains, ponds, and trees
- Brick

RF reflectors include:

- Metal Objects—Metal pans between floors, rebar, fire doors, air conditioning/heating ducts, mesh windows, blinds, chain link fences (depending on aperture size), refrigerators, racks, shelves, and filing cabinets.
- Do not place an access point between two air conditioning/heating ducts. Make sure that access points are placed below ducts to avoid RF disturbances.

RF interference sources include:

- Microwave ovens and other 2.4 or 5 GHz objects (such as cordless phones)
- Cordless headset such as those used in call centers or lunch rooms

RF Radiation Exposure Statement: This equipment complies with RF radiation exposure limits. This equipment should be installed and operated with a minimum distance of 13.78 inches (35cm) between the radiator and your body for 2.4 GHz and 5 GHz operations. This transmitter must not be co-located or operating in conjunction with any other antenna or transmitter.



CAUTION

Déclaration sur les limites d'exposition aux radiofréquences : cet équipement est conforme aux limites d'exposition aux rayonnements radioélectriques spécifiées. Il doit être installé et utilisé à une distance minimale de 35 cm par rapport à votre corps pour les fréquences de 2,4 et 5 GHz. Cet émetteur-récepteur ne doit pas être utilisé ou situé à proximité d'autres antennes ou émetteurs-récepteurs.

Access Point Installation

All Aruba access points should be professionally installed by an Aruba-Certified Mobility Professional (ACMP). The installer is responsible for ensuring that grounding is available and meets applicable national and electrical codes. Failure to properly install this product may result in physical injury and/or damage to property.



CAUTION

Tous les points d'accès Aruba doivent impérativement être installés par un professionnel agréé. Ce dernier doit s'assurer que l'appareil est mis à la terre et que le circuit de mise à la terre est conforme aux codes électriques nationaux en vigueur. Le fait de ne pas installer correctement ce produit peut entraîner des blessures corporelles et / ou des dommages matériels.

Using the Ceiling Rail Adapter

The 320 Series ships with ceiling rail adapters. Additional wall mount adapters and ceiling rail adapters for other rail styles are available as accessory kits.



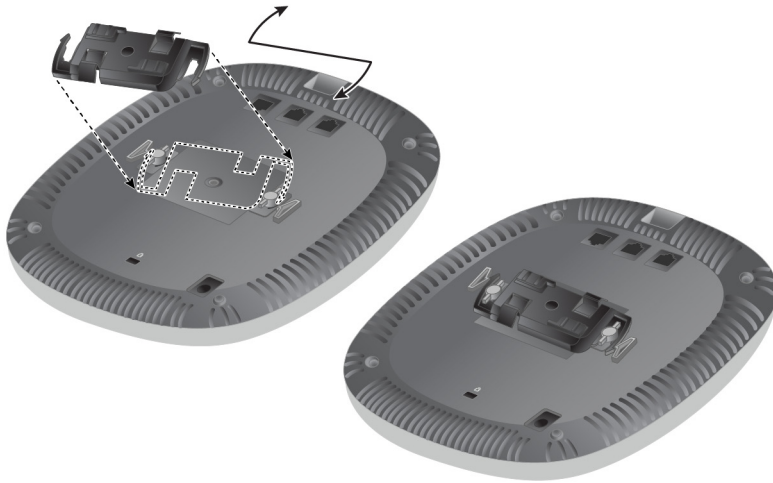
CAUTION

The installer is responsible for securing the access point onto the ceiling tile rail in accordance with the steps below. Failure to properly install this product may result in physical injury and/or damage to property.

Use the steps in this section to install the 320 Series access point.

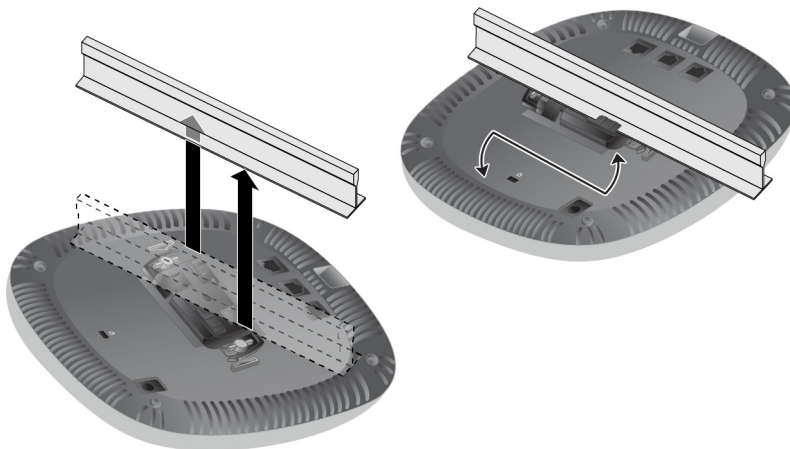
1. Pull the necessary cables through a prepared hole in the ceiling tile near where the access point will be placed.
2. Place the adapter against the back of the access point with the adapter at an angle of approximately 30 degrees to the tabs. See [Figure 7](#).
3. Twist the adapter clockwise until it snaps into place in the tabs. See [Figure 7](#).

Figure 7 Attaching the Ceiling Rail Adapter



4. If necessary, connect the console cable to the console port on the back of the access point.
5. Hold the access point next to the ceiling tile rail with the ceiling tile rail mounting slots at approximately a 30-degree angle to the ceiling tile rail. See [Figure 8](#). Make sure that any cable slack is above the ceiling tile.
6. Pushing toward the ceiling tile, rotate the access point clockwise until the device clicks into place on the ceiling tile rail.

Figure 8 Mounting the Access Point



7. On the AP-324 and IAP-324, install the external antennas according to the manufacturer's instructions, and connect the antennas to the antenna interfaces on the access point.

Connecting Required Cables

Install cables in accordance with all applicable local and national regulations and practices.

Software

AP-324 and AP-325 require ArubaOS 6.4.4 or higher. For additional information, refer to the *ArubaOS User Guide* and *ArubaOS Quick Start Guide*.

IAP-324 and IAP-325 require Aruba Instant 4.2.1 or higher. For additional information, refer to the *Aruba Instant User Guide* or the *Aruba Instant Quick Start Guide*.



Access points are radio transmission devices and are subject to governmental regulation. Network administrators responsible for the configuration and operation of access points must comply with local broadcast regulations. Specifically, access points must use channel assignments appropriate to the location in which the access point is used.

Verifying Post-Installation Connectivity

The integrated LED on the access point can be used to verify that the access point access point is receiving power and initializing successfully (see [Table 1](#) and [Table 2](#)). Refer to the *ArubaOS Quick Start Guide* for further details on verifying post-installation network connectivity.

Configuring the 320 Series



The instructions for this section are applicable to the AP-324 and AP-325 only.

Access Point Provisioning/Reprovisioning

Provisioning parameters are unique to each access point. These local access point parameters are initially configured on the controller, and are then pushed out to the access points and stored on the devices. Aruba recommends that provisioning settings be configured via the ArubaOS Web UI only. Refer to the *ArubaOS User Guide* for complete details.

Access Point Configuration

Configuration parameters are network or controller specific and are configured and stored on the controller. Network configuration settings are pushed out to the access points, but remain stored on the controller. Configuration settings can be configured via the ArubaOS Web UI or ArubaOS CLI. Refer to their respective guides for further details in the *ArubaOS User Guide*.

Electrical and Environmental Specifications

For additional specifications on this product, please refer to the product data sheet at arubanetworks.com.

Electrical

- Ethernet:
 - 2x 10/100/1000 Base-T auto-sensing Ethernet RJ45 Interface (E0-E1)
 - Maximum power consumption (excluding USB): 20W (PoE) or 18.5 W (DC)
 - IEEE 802.3 (10 Base-T), IEEE 802.3u (100 Base-T); IEEE 802.3ab (1000 Base-T)
 - Power over Ethernet (IEEE 802.3af compliant), 48VDC (nominal) or 52V DC (nominal) and 57 VDC/350mA (maximum)



If a power adapter other than the Aruba-approved adapter is used in the US or Canada, it should be NRTL listed, with an output rated 48VDC, minimum 2A, marked "LPS" and "Class 2", and suitable for plugging into a standard power receptacle in the US and Canada.

- Power:
 - 12 VDC power interface, supports powering through an AC-to-DC power adapter (AP-AC-12V36UN)
 - POE support on Ethernet ports: 802.3af-compliant PoE sourcing device

Environmental

- Operating:
 - Temperature: 0° C to +50° C (+32° F to +122° F)
 - Humidity: 5% to 93% non-condensing
- Storage and transport:
 - Temperature: -40° C to +70° C (-40° F to +158° F)
 - Humidity: 5% to 93% non-condensing



For indoor use only. The access point, AC adapter, and all connected cables are not designed for outdoor use.

Ukraine RoHS

Обладнання відповідає вимогам Технічного регламенту щодо обмеження використання деяких небезпечних речовин в електричному та електронному обладнанні, затвердженого постановою Кабінету Міністрів України від 3 грудня 2008 № 1057

Regulatory Information

For the purpose of regulatory compliance certifications and identification, this product has been assigned a unique regulatory model number (RMN). The regulatory model number can be found on the product nameplate label, along with all required approval markings and information. When requesting compliance information for this product, always refer to this regulatory model number. The regulatory model number is not the marketing name or model number of the product.

- AP-324/IAP-324 RMN: APIN324
- AP-325/IAP-325 RMN: APIN325



CAUTION

Changes or modifications to this unit not expressly approved by the party responsible for regulatory compliance could void the user's authority to operate this equipment.

Toute modification effectuée sur cet équipement sans l'autorisation expresse de la partie responsable de la conformité est susceptible d'annuler son droit d'utilisation.

Federal Communication Commission

This device is electronically labeled. Use the following steps to view the FCC ID:

1. Log in to the controller WebUI.
2. Navigate to **Maintenance > About**

Federal Communication Commission

This device complies with Part 15 of the FCC Rules. Operation is subject to the following two conditions: (1) this device may not cause harmful interference, and (2) this device must accept any interference received, including interference that may cause undesired operation.

This equipment has been tested and found to comply with the limits for a Class B digital device, pursuant to Part 15 of the FCC Rules. These limits are designed to provide reasonable protection against harmful interference in a residential installation. This equipment generates, uses, and can radiate radio frequency energy and, if not installed and used in accordance with the instructions, may cause harmful interference to radio communications. However, there is no guarantee that interference will not occur in a particular installation. If this equipment does cause harmful interference to radio or television reception, which can be determined by turning the equipment off and on, the user is encouraged to try to correct the interference by one or more of the following measures:

- Reorient or relocate the receiving antenna.
- Increase the separation between the equipment and receiver.
- Connect the equipment into an outlet on a circuit that is different from that to which the receiver is connected.
- Consult the dealer or an experienced radio or television technician for help.



CAUTION

Improper termination of access points installed in the United States configured to a non-US model controller is a violation of the FCC grant of equipment authorization. Any such willful or intentional violation may result in a requirement by the FCC for immediate termination of operation and may be subject to forfeiture (47 CFR 1.80). The network administrator(s) is/are responsible for ensuring that this device operates in accordance with local/regional laws of the host domain.

European Union Regulatory Conformity

The Declaration of Conformity made under RED 2014/53/EU is available for viewing at: arubanetworks.com, then navigate to the **Declarations of Conformity > Access Point** folder, select the document that corresponds to your device's model number as it is indicated on the product label.

This radio transmitter model has been approved to operate with the antenna types listed in the online ordering guide (link provided below) with the maximum permissible gain indicated. Antenna types not included in this list, having a greater gain than the maximum gain indicated for the type, are strictly prohibited for use with this device. Compliance is only assured if the Aruba approved accessories as listed in the ordering guide are used. http://www.arubanetworks.com/assets/og/OG_AP-320Series.pdf

Wireless Channel Restrictions

5150-5350MHz band is limited to indoor only in the following countries; Austria (AT), Belgium (BE), Bulgaria (BG), Croatia (HR), Cyprus (CY), Czech Republic (CZ), Denmark (DK), Estonia (EE), Finland (FI), France (FR), Germany (DE), Greece (GR), Hungary (HU), Iceland (IS), Ireland (IE), Italy (IT), Latvia (LV), Liechtenstein (LI), Lithuania (LT), Luxembourg (LU), Malta (MT), Netherlands (NL), Norway (NO), Poland (PL), Portugal (PT), Romania (RO), Slovakia (SK), Slovenia (SL), Spain (ES), Sweden (SE), Switzerland (CH), Turkey (TR), United Kingdom (UK).

Frequency Range MHz	Max EIRP
2402-2480	9 dbm
2412-2472	20 dbm
5150-5250	23 dbm
5250-5350	23 dbm
5470-5725	30 dbm
5725-5850	14 dbm



Lower power radio LAN product operating in 2.4 GHz and 5 GHz bands. Please refer to the ArubaOS User Guide/ Instant User Guide for details on restrictions.

Industry Canada

This Class B digital apparatus meets all of the requirements of the Canadian Interference-Causing Equipment Regulations.

In accordance with Industry Canada regulations, this radio transmitter and receiver may only be used with an antenna, the maximum type and gain of which must be approved by Industry Canada. To reduce potential radio interference, the type of antenna and its gain shall be chosen so that the equivalent isotropic radiated power (EIRP) does not exceed the values necessary for effective communication.

This device complies with Industry Canada's license-exempt RSS regulations. Operation of this device is subject to the following two conditions: (1) this device may not cause interference, and (2) this device must accept any interference, including interference that may cause undesired operation.

When operated in the 5.15 to 5.25 GHz frequency range, this device is restricted to indoor use to reduce the potential for harmful interference with co-channel Mobile Satellite Systems.

This radio transmitter model APIN0324 has been approved by Industry Canada to operate with the antenna types listed in the online ordering guide (link provided below) with the maximum permissible gain indicated. Antenna types not included in this list, having a greater gain than the maximum gain indicated for that type, are strictly prohibited for use with this device. http://www.arubanetworks.com/assets/og/OG_AP-320Series.pdf

Déclaration d'Industrie Canada

Conformément aux réglementations d'Industrie Canada, cet émetteur-récepteur radio doit être utilisé uniquement avec une antenne dont le type et le gain maximal doivent être approuvés par Industrie Canada. Pour réduire les interférences radio potentielles, le type d'antenne et son gain doivent être choisis de façon à ce que la puissance isotrope rayonnée équivalente (PIRE) ne dépasse pas les valeurs nécessaires à une communication efficace.

Ce périphérique est conforme aux règlements RSS exempts de licence d'Industrie Canada. L'utilisation de ce périphérique est soumise aux deux conditions suivantes : (1) ce périphérique ne doit pas provoquer d'interférences, et (2) ce périphérique doit accepter toute interférence, y compris les interférences susceptibles de provoquer un dysfonctionnement.

En cas d'utilisation dans la plage de fréquences de 5,15 à 5,25 GHz, cet appareil doit uniquement être utilisé en intérieur afin de réduire les risques d'interférence avec les systèmes satellites mobiles partageant le même canal.

Ce modèle d'émetteur radio APIN0324 a été approuvé par Industrie Canada pour fonctionner avec les types d'antenne énumérés dans le guide de commande en ligne (lien ci-dessous) avec le gain maximal admissible indiqué. Les types d'antennes non inclus dans cette liste, ayant un gain supérieur au gain maximal indiqué pour ce type, sont strictement interdits pour une utilisation avec cet appareil. http://www.arubanetworks.com/assets/og/OG_AP-320Series.pdf

Japan

ご使用になっている装置に VCCI マークが付いていましたら、次の説明文をお読み下さい。

この装置は、クラス B 情報技術装置です。この装置は、家庭環境で使用することを目的としていますが、この装置がラジオやテレビジョン受信機に近接して使用されると、受信障害を引き起こすことがあります。取扱説明書に従って正しい取り扱いをして下さい。

VCCI-B

Brazil

Este equipamento opera em caráter secundário, isto é, não tem direito a proteção contra interferência prejudicial, mesmo de estações do mesmo tipo, e não pode causar interferência a sistemas operando em caráter primário.

Mexico

La operación de este equipo está sujeta a las siguientes dos condiciones: (1) es posible que este equipo o dispositivo no cause interferencia perjudicial y (2) este equipo o dispositivo debe aceptar cualquier interferencia, incluyendo la que pueda causar su operación no deseada.

Este equipo ha sido diseñado para operar con las antenas que enseguida se enlistan, en el punto 4: https://www.arubanetworks.com/assets/og/OG_AP-320Series.pdf y para una ganancia máxima de antena de 8.5 dBi.

El uso con este equipo de antenas no incluidas en esta lista o que tengan una ganancia mayor que 8.5 dBi quedan prohibidas La impedancia requerida de la antena es de 50 ohms.

Morocco



Нормативные требования Евразийского Экономического Союза

Russia



'HPE Russia': ООО "Хьюлетт Паккард Энтерпрайз" Российская Федерация, 125171, г. Москва, Ленинградское шоссе, 16А, стр.3, Телефон: +7 499 403 4248 Факс: +7 499 403 4677

'HPE Belarus': ИООО «Хьюлетт-Паккард Бел», Республика Беларусь, 220030, г. Минск, ул. Интернациональная, 36-1, Телефон/факс: +375 17 392 28 20

'HPE Kazakhstan': ТОО «Хьюлетт-Паккард (К)», Республика Казахстан, 050040, г. Алматы, Бостандыкский район, проспект Аль-Фараби, 77/7, Телефон/факс: +7 727 355 35 50

Kazakhstan

ЖШС "Хьюлетт Паккард Энтерпрайз" Ресей Федерациясы, 125171, Мәскеу, Ленинград тас жолы, 16А блок 3, Телефон: +7 499 403 4248 Факс: +7 499 403 4677

«HEWLETT-PACKARD Bel» ЖШС, Беларусь Республикасы, 220030, Минск қ., Интернациональная көшесі, 36/1, Телефон/факс: +375 17 392 28 20

Korean

B급 기기 (가정용 방송통신기기)	이 기기는 가정용(B급)으로 전자파적합등록을 한 기기로서 주로 가정에서 사용하는 것을 목적으로 하며, 모든 지역에서 사용할 수 있습니다.
-----------------------	--

이 기기는 업무용 환경에서 사용할 목적으로 적합성평가를 받은 기기로서 가정용 환경에서 사용하는 경우 전파간섭의 우려가 있습니다.

=> 사용자 안내문은 " 업무용방송통신기자재 "에만 해당된다

Taiwan

第十二條

取得審驗證明之低功率射頻器材，非經許可，公司，商號或使用者均不得擅自變更頻率、加大功率或變更原設計之特性及功能。

第十四條

低功率射頻電機之使用不得影響飛航安全及干擾合法通信；經發現有干擾現象時，應立即停用，並改善至無干擾時方得繼續使用。

前項合法通信，指依電信法規定作業之無線電通信。低功率射頻電機須忍受合法通信或工業、科學及醫療用電波輻射性電機設備之干擾。

1. 應避免影響附近雷達系統之操作。

2. 高增益指向性天線只得應用於固定式點對點系統

3. 電磁波暴露量 MPE 標準值 1 mW/cm², 送測產品實測值為 : 0.577 mW/cm²

“本器材須經專業工程人員安裝及設定，始得設置使用，且不得直接販售給一般消費者

Medical

1. Equipment not suitable for use in the presence of flammable mixtures.
2. Connect to only IEC 60950-1 or IEC 60601-1 3rd edition certified products and power sources. The end user is responsible for the resulting medical system complies with the requirements of IEC 60601-1 3rd edition.
3. Wipe with a dry cloth, no additional maintenance required.
4. No serviceable parts, the unit must be sent back to the manufacturer for repair.
5. No modifications are allowed without Aruba approval.



For additional compliance information, refer to the regulatory label on the back of this device.

Contact Aruba

Main Site	http://www.arubanetworks.com
Support Site	http://www.arubanetworks.com
Airheads Social Forums and Knowledge Base	http://community.arubanetworks.com/
North America Telephone	1-800-943-4526 (toll free) 1-408-754-1200
International Telephone	http://arubanetworks.com/support-services/contact-support/
Software Licensing Site	http://hpe.com/networking/support
End-of-Life Information	http://arubanetworks.com/support-services/end-of-life/
Security Incident Response Team (SIRT)	Site: http://www.arubanetworks.com/support-service/security-bulletins/ Email: sirt@arubanetworks.com

Copyright

© Copyright 2022 Hewlett Packard Enterprise Development LP

Open Source Code

This product includes code licensed under the GNU General Public License, the GNU Lesser General Public License, and/or certain other open source licenses.

A complete machine-readable copy of the source code corresponding to such code is available upon request. This offer is valid to anyone in receipt of this information and shall expire three years following the date of the final distribution of this product version by Hewlett Packard Enterprise Company.

To obtain such source code, send a check or money order in the amount of US \$10.00 to:

Hewlett Packard Enterprise Company

Attn: General Counsel

3000 Hanover Street

Palo Alto, CA 94304

USA

Warranty

This hardware product is protected by an Aruba warranty. For more details visit www.hpe.com/us/en/support.html