

Quick Start Guide

EdgeConnect

EC-US

Part 1 - Physical Installation

Before You Begin

- ❑ Check your packing slip to verify that you have all the necessary items.
- ❑ On the network equipment, identify the 10/100/1000 Ethernet ports.

aruba

a Hewlett Packard
Enterprise company

Aruba
6280 America Center Drive
San Jose, CA 95002

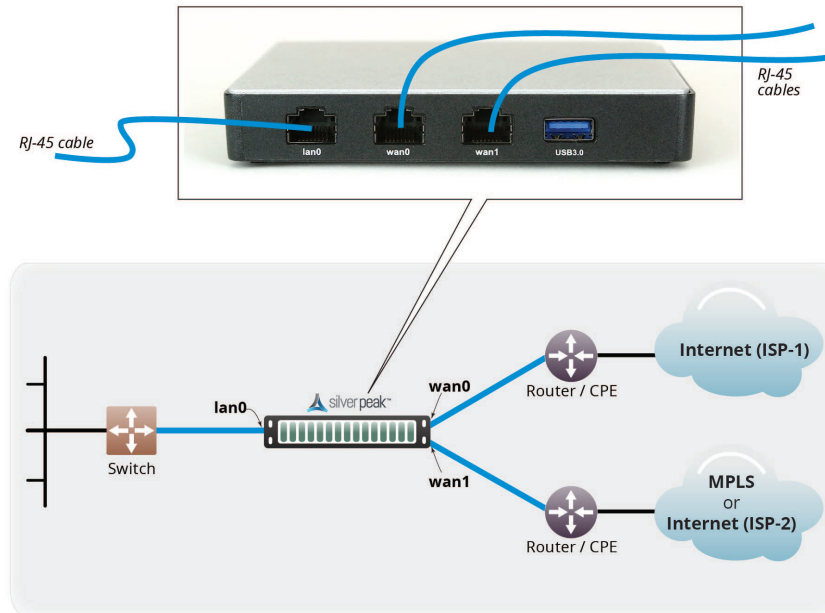
1.877.210.7325 (toll-free in USA)
+1.408.935.1850

www.silver-peak.com/support

IMPORTANT - READ THIS FIRST: You must install and register your Orchestrator with the Silver Peak Cloud Portal **BEFORE** setting up an EdgeConnect appliance. After Orchestrator is registered with your account name and key, you can proceed with EdgeConnect installation. If you don't know or are unsure what role the Orchestrator plays, please contact your network architect or deployment lead.

1 Install the Appliance into the Network

- Identify the relevant ports on the rear of the appliance.
- Connect the supplied network cables from the appliance to the identified network equipment ports.
- DO NOT** connect the power cable yet.



All copper RJ-45 Gigabit Ethernet interfaces in the Silver Peak appliance support MDI/MDI-X and auto-negotiation.

2 Connect Power Cord

Connect the power cable to the Silver Peak appliance and to your local power source.

3 Turn the Power On

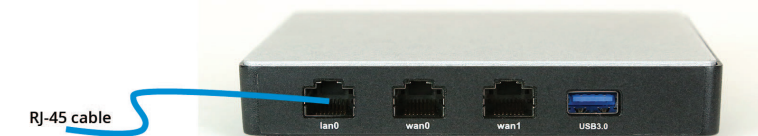
- The appliance powers up as soon as it's plugged in.
- On the front panel, verify that the **Power** LED illuminates green.

You've now completed the physical installation and are ready to register the product with Unity Orchestrator.

Static Assignment of IP Address

If an IP address is not dynamically assigned to wan0 or wan1, then you must configure it manually. To do this, access the appliance configuration wizard through lan0.

Silver Peak assigns the lan0 ethernet interface a default IP address of 169.254.0.1 and a subnet mask of /16 (the same as 255.255.0.0).



Quick Start Guide EdgeConnect

EC-US

Part 2 - Registration

Before You Begin

- ❑ Make sure that Orchestrator is installed and registered.
- ❑ Verify that you've received the email containing your Account Name and Account Key.



Aruba
6280 America Center Drive
San Jose, CA 95002

1.877.210.7325 (toll-free in USA)
+1.408.935.1850

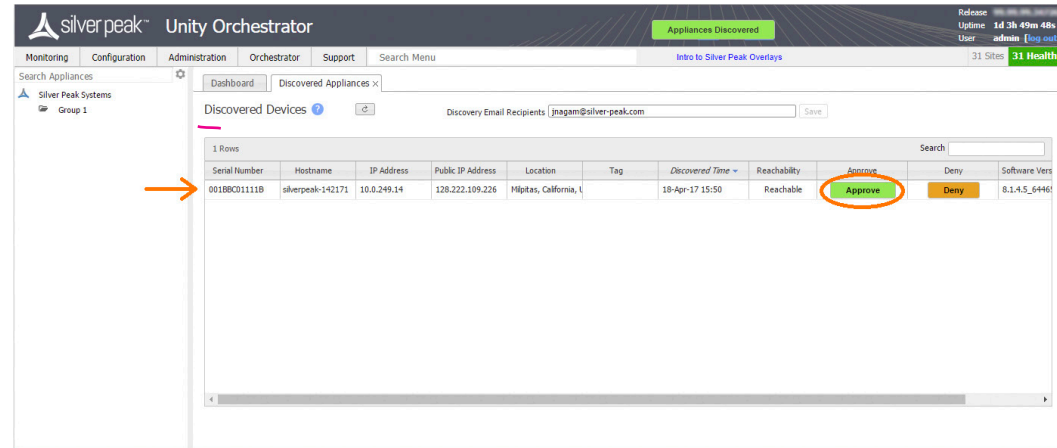
www.silver-peak.com/support

IMPORTANT - READ THIS FIRST: You must install and register your Orchestrator with the Silver Peak Cloud Portal **BEFORE** setting up an EdgeConnect appliance. After Orchestrator is registered with your account name and key, you can proceed with EdgeConnect installation. If you don't know or are unsure what role the Orchestrator plays, please contact your network architect or deployment lead.

1 Approve the Discovered Appliance

After you power on the EdgeConnect appliance, it automatically registers its serial number with the Silver Peak Cloud Portal. The portal knows how to associate a serial number with a particular account.

- Go to the Orchestrator.
- In the header, click the blinking box named **Appliances Discovered**. The **Discovered Appliances** page opens, listing the most recently discovered appliances first.



- After verifying that the appliance is yours, click **Approve**.
- Select the group and click **Apply**. The Appliance Manager Configuration Wizard opens.

2 Complete the Appliance Manager Configuration Wizard

Appliance Wizard

Appliance Setup

1 2 3 4

Hostname* silverpeak-142171 Site Name

Group* North America Hub Site? Not a hub Hub

Admin Password* Contact Name

Confirm Password* Contact Email

Software Version Serial Number* 001B8C01111B

Location Address 1

Address 2

City San Jose State California

Zip Code Country US

Region Region Type to select

< Previous Next > Apply

- If you've also purchased *EdgeConnect Boost* or *EdgeConnect Plus*, and you want to apply it to this appliance, select the relevant check box(es) on the **Deployment Profile** page.
- At the end, click **Apply**. It may take up to two minutes to register the appliance.
- Complete the remaining wizard screens.
 - On the **Deployment** page's default configuration, the WAN-side interfaces use DHCP IP addresses, unless you manually enter static IP addresses.